



BUILDING
Connection
capital campaign

 **GRYPHON
PLACE**^{2:1:1}_{9:8:8}

A NOTE

Over the last few years, we changed in ways we couldn't have predicted pre-pandemic. Amid these changes, our organization tripled in size, and we expanded our services throughout the state and country.

With this incredible growth, we quickly reached our building capacity, and our staff began to work remotely. While we still offer various trainings in our facility, we're limited by the lack of capacity. In addition to outgrowing our current building, we have seen an increased need to deepen relationships with our partners who are service providers. By working closely together with these organizations, we'll be able to provide a person-centered approach to well-being in our community. To accomplish this goal, we need a location in downtown Kalamazoo so people can meet with our team in-person to get the support they need.

Throughout all these changes, we continue to be committed to compassion, understanding, inclusivity, and connection. We are committed to Kalamazoo. It is our hope that you'll join us in this campaign to support our new facility in any way you're able.

Sincerely,

Maricela Alcalá
Chief Executive Officer



339,597
crisis calls

2018-2023 data



2,612
2-1-1 programs



UNWAVERING MISSION

Gryphon Place's mission is to help people navigate crisis and conflict, foster resiliency, restore community, and support healing. The money raised through this Capital Campaign will ensure we are able to continue that mission in the most effective way possible.

In 2022, Gryphon Place hosted community conversations to understand how our services impact the community and how we can improve. Feedback indicated that the community is looking for a more coordinated and integrated approach to services. The consistent recommendation was for Gryphon Place to operate closer to downtown Kalamazoo in order to be more easily accessible to those who need our services.

You can help us provide crucial services to our community by donating to our *Building Connection Capital Campaign*. By re-establishing a downtown Kalamazoo location, Gryphon Place will be able to provide in-person, walk-in assistance for navigating community resources and for crisis support, as well as implement new programs and services.

OUR PAST POINTS TO OUR FUTURE

In 1970, a nonprofit youth drug drop-in center called Gryphon House was formed. The next year, the overdose aid drug information line began, which later became the Helpline (269-381-HELP). Gryphon House then changed its name to Gryphon Place, and the Helpline became a 24/7 operation. Since then, Gryphon Place has

continued to grow by expanding and absorbing several conflict and crisis programs in Southwest Michigan. Gryphon Place still holds true to its original mission to help people in conflict and crisis, while also improving and enhancing our programs and services to best serve the community's evolving needs.

CONTINUE TO GROW

With Gryphon Place's continuous growth, we are **expanding back to downtown Kalamazoo**, close to our original location in the firehouse. This expansion to a second location will allow us to provide 2-1-1 referrals and crisis intervention **services in person**. Additionally, it will provide a social space during the day for students in our youth development and community programs. We can also implement the Community Information Exchange® (CIE), a framework that supports an individual in seeking and obtaining services by exchanging data among multiple agencies.

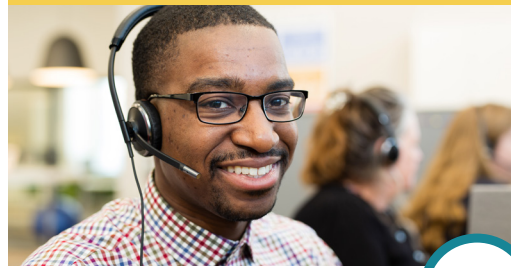
EXPANDING BACK TO OUR ROOTS



NAME CHANGED TO GRYPHON PLACE



BECOMES KALAMAZOO'S 2-1-1 CENTER



1970

1971

1973

1988

2003

2011

2022

2024



FIRST HOTLINE BEGAN



STARTED THE GATEKEEPER PROGRAM



MOVED INTO CURRENT BUILDING



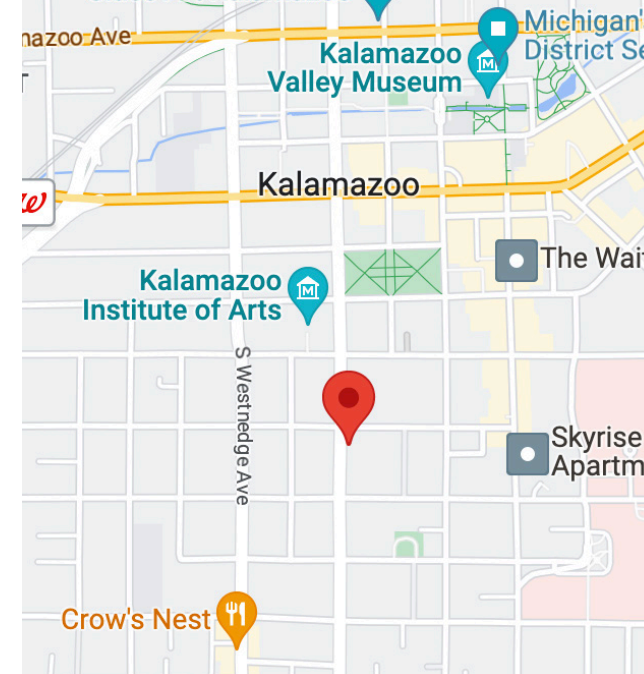
9-8-8 LAUNCHED

EXPANDING DOWNTOWN

321 W Cedar St.
Formerly KPEP

After our community conversations, we began researching building options in and around downtown Kalamazoo. After an extensive search, the building at 321 W Cedar Street was chosen. This was a former site of KPEP and a building that is designed to suit our program needs.

A downtown location will increase Gryphon Place's visibility and accessibility to individuals who may have the greatest need for resource navigation and crisis support. It also makes Gryphon Place accessible to those using public transportation, walking, or biking.



SATELLITE SERVICES

By re-establishing an office in downtown Kalamazoo, Gryphon Place will be in close proximity to multiple community partners, allowing for more direct access for individuals and providing space for partner organizations to provide "pop-up" or satellite services.

Gryphon Place will also host the Youth Social Hub at the downtown Kalamazoo location. In the short-term, the downtown Kalamazoo location could address basic needs by serving as a warming/cooling shelter and hosting a food pantry.

KALAMAZOO DEMOGRAPHICS

The City of Kalamazoo has the highest concentration of economically-challenged individuals in the county with a poverty rate of 25%, and 53% of households overall living below the Asset Limited, Income Constrained, Employed (ALICE) threshold.

25%
poverty rate

53%
below ALICE





YOUTH SOCIAL HUB

COMMUNITY INFORMATION EXCHANGE[®]

The Youth Social Hub will serve as a centralized source of support to Kalamazoo County youth connecting and helping navigate community resources and social-emotional learning support in partnership with area youth serving agencies and schools. Gryphon Place wants to empower young people to reach their full potential by providing comprehensive youth development services in a restorative, culturally responsive and caring environment. We will have collaborative services provided by people with lived experience to help inform and navigate our youth through crisis and conflict. The Hub will also house Gryphon Place's Justice Lifted Youth Diversion Program, be a place for community partners to offer programming, and provide health and human services, in addition to academic supportive services. The focus of the Hub will be to promote a positive and healthy community for all, while helping develop healthy, capable young people and families.

As part of last year's community conversations, feedback indicated the community is looking for a more coordinated and integrated approach to services. Gryphon Place has the opportunity to increase its accessibility and support the implementation of a Community Information Exchange[®] (CIE). CIE is a framework that supports a community member in seeking and obtaining services by exchanging data among multiple organizations. It puts the individual at the center, allowing agencies to better tailor and provide services specific to the individual while also allowing the individual to seek services at multiple agencies more seamlessly. This is accomplished through community partners' use of a shared language, a shared resource database, and an integrated technology platform. Expanding downtown will allow us to provide this in-person assistance.



24/7 basic needs access



peer-led & operated



community centered



social programming



increased accessibility



shared resources



reducing silos



efficient system

OUR NEXT STEPS

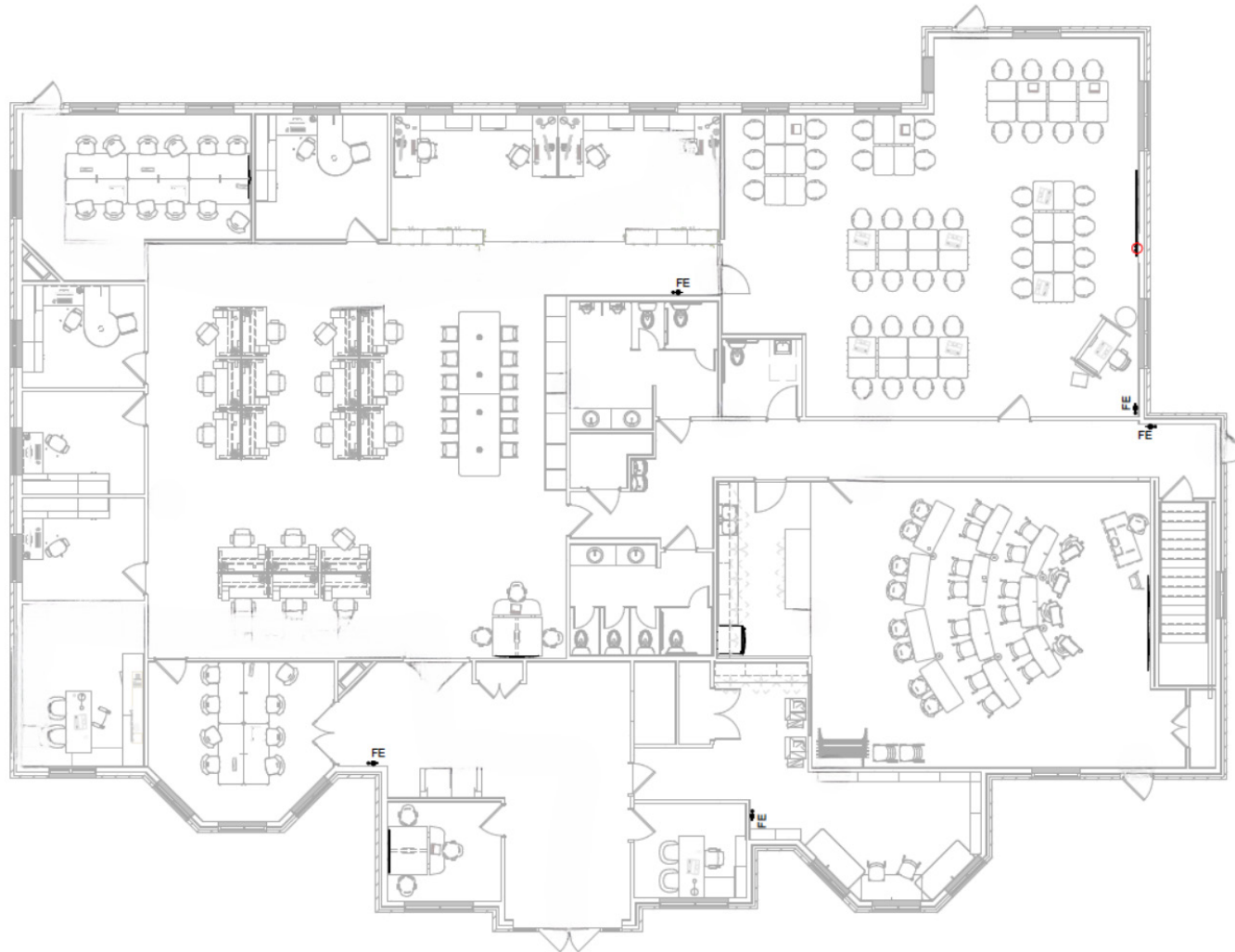
Gryphon Place will renovate its current 8th Street building to better serve the community as our Administrative & Training Center (this project has been funded). The current space presents challenges to delivering a high-quality training environment.

Both larger spaces and breakout rooms are needed for suicide prevention trainings and to support the bi-monthly training and on-boarding of new staff, including computer access for Crisis Worker training.

Renovations will also provide dedicated space for Restorative Practices services that will address current privacy concerns, as well as supplemental workstations for Youth Programs. Additionally, Gryphon Place will use the renovation to address areas of improvement that were identified during the ADA audit conducted by the Disability Network of Southwest Michigan.

PROJECT GOALS:

- Three training rooms - one with a capacity of 30+ and one designed for Contact Center training for Crisis Workers
- Dedicated space for Restorative Practices services
- Workstations/storage for Youth Programs to support data entry and material storage
- Workspace/office space to support training breakouts, collaborative work, and meetings



ADMINISTRATIVE & TRAINING CENTER
RENOVATIONS HAVE BEEN FUNDED



WHAT WILL IT TAKE?

\$1 million goal

Currently we are pursuing various funding opportunities to help us purchase the downtown building. However, those funding opportunities will not cover the full cost of the building. We anticipate that with the additional funds raised in the *Building Connection Capital Campaign* we will be able to purchase the building and focus on growing and expanding our programs downtown.

At the time of print in August, we are 60% of the way towards our goal of \$1,000,000. With your help, we can reach our goal by February 11, 2024 (2-1-1 Day).

February 2024
100% Funded

May 2024
Move Into Building

July 2024
Open to Public



WAYS TO GIVE

Your generous gift will help us continue to be an ally in addressing life's challenges. We welcome all gift amounts, as all funds raised will go towards our new location downtown, and allow us to expand our mission to help those in conflict and crisis.



ONLINE

Donate at gryphon.org/donate and select "Capital Campaign"



BY PHONE

Call us at 269-381-1150



BY MAIL

Make payable to Gryphon Place and include "Capital Campaign" in the memo

Mail to Gryphon Place, P.O. Box 378
Portage, MI 49081

\$500

Name listed on Capital Campaign webpage, name listed in newsletter, Gryphon Place t-shirt and sticker

\$1,000

Name listed on Capital Campaign plaque, and benefits above

\$5,000

Exclusive invitation to open house, Gryphon goodies basket, and benefits above

\$10,000

Spotlight on social media, 2 free Eat Drink Give tickets, and benefits above

\$20,000

Press release mentioning benefactors, logo on "now open" banner, and benefits above

\$50,000

Spotlight in newsletter, and benefits above

\$100,000+

Room named in your honor (limited availability), private tour of facilities with CEO, and benefits above

**All donations are tax deductible*

CAPITAL CAMPAIGN SUMMARY

Two goals

Gryphon Place seeks to accomplish two goals through the proposed project. We will improve the training and service delivery environment for community members in our renovated Administrative & Training Center. We will also increase our visibility and accessibility to support walk-in services for resource navigation and crisis support.

donations

The renovation of our current facility to become our Administrative and Training facility has been funded. All funds raised in the *Building Connection Capital Campaign* will go directly toward our new downtown location, and allow us to expand our mission to help those in conflict and crisis.

funding

What exactly is the \$1 million dollars going toward? Largely, the funds will help us purchase the downtown building at 321 W Cedar St. The building is well suited for our needs and does not require immediate renovations. The rest of the funds will go toward programmatic needs and facility management equipment.

the need

The City of Kalamazoo has a poverty rate of 25%, with 53% of households overall living below the Asset Limited, Income Constrained, Employed (ALICE) threshold. Re-establishing ourselves downtown will increase accessibility to those who have the greatest need for resource navigation and crisis support.

programs

We will implement the Youth Social Hub and Community Information Exchange® in our new downtown location. These programs will provide safety, security, support, and face-to-face connection with individuals in our community. Also, with this location in close proximity to multiple community partners, we can partner with organizations to provide “pop-up” or satellite services.

INTERESTED IN **LEARNING MORE?**

If you are interested in donating or would like an informational meeting,
please reach out to our Marketing & Advacement Director:
Sarah Mead, smead@gryphon.org



gryphon.org • (269) 381-1510 • P.O. Box 378, Portage, MI 49081

